

The Kia EV6.



Movement that inspires



Be inspired by movement.
Introducing the new Kia brand.

Inspiration doesn't happen by chance. It comes to us when we get out of our comfort zone and enter new surroundings. When we see the world with fresh eyes and from new perspectives. We find it when we move. Kia is here to guide you through the inspirational power of movement, so you can reach your creative potential. That's why everything we create gives you the space to be inspired and the time to bring your ideas to life. So join us on this exciting journey and discover with Kia how movement inspires.

Inspiring every journey. The Kia EV6.

From its distinctive exterior and innovative interior design to its intuitive advanced technologies, the fully electric Kia EV6 is created to inspire you on every journey.

Movement that inspires.





E-GMP. A new EV platform.

The Kia EV6 is Kia's first EV built on the Electric Global Modular Platform (E-GMP). Ultra-fast charging. Long range. Spacious interior. Zero emissions. All this is made possible by the new E-GMP platform. With the new platform we are taking EVs to the next level.

The Kia EV6. Only the first of many more great things to come.

Ideas need variety.

When it comes to creativity, it's about seeing the world in a different light. With the sophisticated Kia EV6 and the sporty GT-line, you have all the variety you need. Whether you're in for sportiness or laidback elegance: the different design lines make a great impression from every point of view.





Make every detail count.

When many small things come together in harmony, big ideas aren't far away. That's why the fully electric Kia EV6 makes every detail count through clever use of space and a smart exterior concept.





A new standard for sustainable mobility.

Interior design is about creating the most user-centric and immersive experience through design, intuitive technologies and sustainable elements. When you're inside the Kia EV6, there's plenty of cabin space, so you can breathe freely while the vegan leather and recycled PET materials emphasize the car's sustainable nature.



An immersive journey for everyone.

The immersive dual 12.3" panoramic curved displays enhance your driving experience by providing important information without you needing to take your eyes off the road. And in case your phone is running out of battery, the Kia EV6 comes equipped with a range of charging ports that complete the inspirational character of the interior.



The dual 12.3" panoramic curved displays. The Kia EV6's integrated curved displays are not only beautiful, but offer a truly immersive experience. They enhance the driving experience by providing high-definition navigation and important information, with minimal controls for an unobstructed and easy driving experience.



Wireless phone charger. The charging pad in the front centre console lets you charge compatible mobile phones wirelessly. It operates with up to 15 W of power, so charging is reassuringly fast.



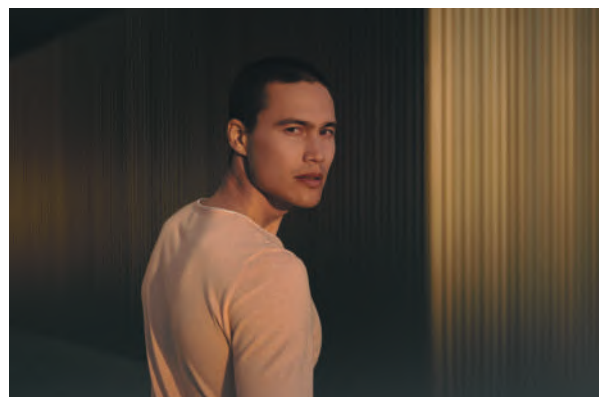
USB ports on seatbacks. Convenience is important for everyone on board. Rear seat passengers will find USB ports in the seatbacks in front of them, so they can power their devices whenever they want.



Infotainment/climate switchable controller. The switchable controller offers an intuitive way to interact with the car, while keeping all important information easily accessible. Press the one-touch infotainment icon or climate icon, and the relevant menus to make any adjustment you desire.

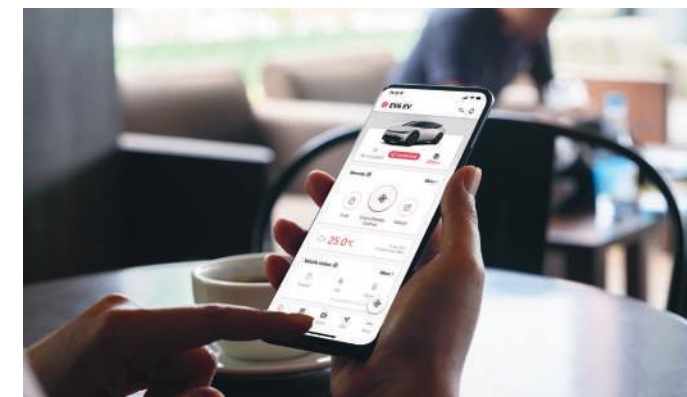
Stay connected. Get inspired.

At Kia, we believe connections can inspire endless opportunities. Opportunities that inspire you to bring great ideas to life. In the car, on the phone, wherever you are and whatever you're looking for. Which is exactly what you'll find with the Kia Connect app and Kia Connect on-board services, designed to constantly monitor your car and offer seamless information about your journey. Be constantly informed on-board with **online navigation** using real-time traffic data, including **charging stations, parking, weather** and **points of interest** plus **voice recognition** and more. Through the Kia Connect app, you can access **user profile transfer, last-mile navigation, valet parking, find my car, door control** and many other features. With so much at your fingertips, there's never been a better time to make every drive ... a truly inspiring drive.



Always on the go. With Kia Connect on-board services, you have access to a whole host of seamless and detailed information for your trip. Navigate the fastest route to any destination with **real-time traffic data**, including constantly updated adjustments and estimated arrival time. Use **Kia Connect live services** to track the weather and check parking availability, points of interest and charging stations. Activate **voice recognition** for hands-free voice commands. Change or restore your vehicle settings with **user profile transfer**. Access your smartphone calendar on your navigation screen with the **third-party calendar** and let it guide you straight to the location of your upcoming appointments.

Connect to convenience. Even when you're not in your car, using the interactive Kia Connect app on your smartphone is the easy and convenient way to save time and keep you connected. Tap the **find my car** function to search for your car in large car parks or on unfamiliar streets. Once you've parked, let **last-mile navigation** take you by the hand and guide you from your car to your end destination. If someone else is driving your car, the **valet parking** function monitors all that for you. Plan and set your journey in advance with **send to car** and check your **vehicle status** before you go. You can even remotely lock and unlock doors with the **door control** and see your previous journeys summarized under **my trips**.



Electric to the touch. When you drive one of Kia's electric models, the Kia Connect app and Kia Connect on-board services keep you firmly in the know and in control. With the Kia Connect app, you can remotely access **battery charging** to start, stop and schedule your charging progress. Hit **remote climate control** and you can set and schedule the temperature before you get in the car, so it's just right. With Kia Connect on-board services you can find a charging point under **live EV stations**; using data from the up-to-date real-time network, you can easily discover the locations of charging stations as well as other details such as plug availability and compatible connector types.

Safety & Service Support. With Kia Connect, you can keep you and your car safe and sound using a range of groundbreaking remote notifications. **Vehicle status** offers a comprehensive report on your car including whether windows are open or closed, battery charge and other vital diagnostic information. Kia Connect also sends you important alarm alerts. The **battery discharge alarm** tells you immediately if the 12 V battery charge drops below a certain level. The **anti-theft alarm** alerts you to potential break-ins, and the **rear passenger alarm** alerts you to any movement in the rear of the car. The **vehicle idle alarm** notifies you if you forget the engine is running while in Park mode (gear P) with the door open.

* Information and control service for your Kia; the services will be available free of charge for a period of seven years commencing on the day the vehicle is sold to the first owner of the vehicle, i.e. the point in time the initial purchase agreement becomes effective, and may be subject to change during that period. Details of operation and terms of use can be obtained from your Kia partner and on kia.com. Smartphone with iOS or Android operating system and mobile phone contract with data option necessary incurring additional cost.

The displayed Kia Connect screens are for illustration purposes only and do not necessarily show the latest version of the Kia Connect app and Kia Connect on-board services.

For any questions regarding regulations or legal details, please check the Kia Connect Terms of Use.



Stay informed. Get exploring.

If living life is embracing the exciting things round the next corner or the adventures over the next horizon, then at Kia we're with you. That's why we've teamed up with TomTom to power Kia Connect on-board services. From your daily commute to weekend adventures or simply just taking off somewhere, TomTom makes driving smarter and safer. Take advantage of reliable and accurate route guidance to identify the fastest route for each journey using real-time traffic information. Keep in touch with all that's going on, using TomTom Traffic, TomTom Local Search and TomTom Weather. In fact, wherever your life wants to take you, with Kia Connect live services you're ready.*



Apple CarPlay™ is a smart, safe way to use your iPhone while driving. It takes all the things you might want to do, and puts them into your EV6 display, so you can get directions, make a call and listen to music all while staying focused on the road.



Android Auto™ is designed to keep you perfectly connected to your phone while minimizing distractions so you stay safe on the road. The simple, intuitive interface lets you access features like Google Maps, apps, music and voice control, and automatically organizes info into simple cards that appear just when they're needed.



Parking information and charging stations. To help you park your car swiftly, the system will indicate parking areas before you arrive at your destination. It will show potential on-street parking spaces based on historic data, and off-street

parking with colour-coded availability. The online directory displays the locations of charging stations as well as other details such as payment methods, plug availability and compatible connector types.



Live traffic. The navigation system delivers highly accurate live traffic information that is updated every two minutes, so you know exactly where traffic is running smoothly, or which areas to avoid. When things get busy, the system lets you know and suggests alternative routes.



Local Search and weather forecast. If you're looking for a sushi restaurant, a supermarket or a particular place to meet, simply select Local Search. Is your weekend away going to be sunny or a washout? Better check the weather forecast. Just type in your destination to view a four-day summary, complete with minimum and maximum temperatures, wind speed and chances of sun or rain.

* The European Data Protection Regulation became applicable as of 25 May, 2018, in all member states for any company that stores or processes personal information about EU citizens within EU states. It is a layout copy, not a final legal text.
 ** Smartphone with data plan required to activate services.
 *** Legal restrictions to these services may apply depending on country usage.

Less searching and more discovering.

Let our technology handle the details. So you can stay more connected to the journey. By prioritizing information, the fully electric Kia EV6 lets you take in more of the world outside, and spend less time scanning screens and dials. Information is presented on clean, compact digital displays, and can even be projected onto the windscreen.



Augmented Reality head-up display (AR-HUD). The new AR head-up display introduces a virtual display on the windscreen to guide you to your destination. It draws the navigation guidance onto the streets ahead of you and provides all the key information for hassle-free and safe trips. GT-line only.



Wide sunroof. Airflow adds to the sense of openness. The roomy dimensions of the Kia EV6 seem to expand with the wide tilt-sliding sunroof. It takes full advantage of the roof geometry, offering a broader opening for light and breezes to get inside. GT-line only.



Relaxation as a design objective.

With a flat floor and a broad-shouldered frame, the Kia EV6 gave our designers more freedom to create the best design for you. The seats take up less space, but deliver more. The zero-gravity Relaxion comfort seats provide a wide range of settings so that your body is in its most comfortable position, minimizing the fatigue or discomfort you might have experienced with conventional seats, especially on long drives or when you're waiting for your car to top up its battery. Because when you're more relaxed, ideas flow better.

Relaxion comfort seats. The front seats are slimmer and more comfortable and offer more adjustability than ever before. While you charge the Kia EV6, the Relaxion seats let you recline to optimize your posture and the distribution of pressure on your body.



Second-row seat comfort. The slim front seats, the unique E-GMP platform layout and the flat floor give rear passengers more legroom. There are headrests in every position, and a centre armrest incorporates a storage box with sliding cupholder. Air vents on the B-pillars offer refreshing airflow.



Heated and ventilated seats. Ventilated front seats give the driver and front passenger a more comfortable ride when the weather is warm or humid. Control the fans using the console touch buttons and adjust the levels of heating to meet the needs of passengers in the front and rear. GT-line only.

Cargo space as big as your ideas.

When you're starting from scratch on a new platform, the possibilities are endless. Especially when it comes to cargo storage. The Kia EV6 lets you store items in places you never imagined. Under the front bonnet, under the rear cargo floor, under the cargo screen and even in spaces between and under the seats. But in case you need to accommodate even bigger items, the rear seats also fold. Because ideas come in a wide range of sizes.



Console tray. The center console includes an armrest, cup-holders, a wireless charging pad above, and an open tray below that can hold shoes, tablets, or handbags.



Front storage trunk (52 l). Extra space is a useful benefit of the new Kia EV6 platform. That includes a convenient storage space under the front bonnet. It holds up to 52 l on 2WD models.



Smart power tailgate. The power tailgate can be set to open automatically to a desired height. Stand behind the parked Kia EV6 for three seconds, and the tailgate will open automatically.



Remote second-row seatback folding. Pull the remote release lever on the wall of the cargo space to fold the rear seatback down, creating 1,300 l of storage capacity. With the lever's convenient location, it's like having an extra pair of hands when you need to load long or bulky items.



Forward Collision-Avoidance Assist with junction turning (FCA). FCA uses a front-view camera and radar to detect any vehicles, pedestrians or cyclists ahead. By warning and braking automatically, it can help you avoid, or reduce the severity of, an accident. The system also engages if you are turning at an intersection.



Blind-Spot Collision-Avoidance Assist (BCA). When you signal a lane change, you will be warned if a risk of collision with a vehicle approaching from the rear is detected. If the risk persists and increases, BCA automatically controls the vehicle to help avoid a collision. If you are exiting a parallel parking spot and there is a risk of a collision with an approaching vehicle, BCA automatically applies emergency braking.

Less time for worry, more time for inspiration.

Kia's DRIVE WiSE applies the latest Advanced Driver Assistance System (ADAS) technologies to help ensure the ultimate in occupant and pedestrian safety. At the same time, it decreases fatigue that comes from daily commutes, traffic jams and stressful, tedious driving situations.

Our technology works to enhance your journey. To make it more enjoyable and relaxing.



Safe Exit Assist (SEA). When the occupant opens the door to exit the vehicle after a stop, a warning sounds if an approaching vehicle from the rear side is detected. The function also helps keep the rear door closed with the electronic child lock.



Surround View Monitor (SVM). When manoeuvring in confined spaces, multiple cameras give you a zoomable, 360° overhead view around the vehicle, so you can steer and park with confidence. There is no need to exit the vehicle to check clearances or ask others for help. GT-Line only.

Be prepared for the unexpected.

No matter how careful we are, situations on the road are unpredictable. DRIVE WiSE technology is always collecting data around you, running computations and learning, so as to find ways to protect you better. If it spots trouble, it warns you, and even steps in when needed. There's extra peace of mind in knowing that wherever you go, you are not alone out there.

With Remote Smart Parking Assist (RSPA) you can park or unpark the Kia EV6 even if you aren't inside. Using sensors, RSPA can safely move the Kia EV6 into or out of a parallel or perpendicular space. Braking is automatic if an obstacle is detected. GT-line only.



Rear Cross Traffic Avoidance Assist (RCCA). If there is a risk of collision with an oncoming vehicle on the left or right side while reversing, RCCA provides a warning. After the warning, if the risk of collision increases, RCCA automatically assists with emergency braking.



Navigation-based Smart Cruise Control (N-SCC). Smart Cruise Control helps the driver maintain distance from the vehicle ahead and drive at a speed set by the driver. The vehicle stops automatically if the vehicle ahead stops, and then starts again automatically if the vehicle ahead starts again within a short time. If a certain period of time has elapsed, pressing the accelerator pedal or the +/- switch will start the vehicle again. In addition, the SCC is also able to adjust speed in curves when needed and can learn your driving style and reflect on it in the way the system behaves.

In control of your charge status.

Time, distance and charging. These are constant concerns when it comes to an EV. That's why the Kia EV6 puts everything into perspective, so you are in control. The driver EV interface on the cluster screen gives you real-time updates and options with simple icons. Letting you know that everything is in order, so you can enjoy the ride without worrying about your next battery charge.



Shift By Wire (SBW). All you need to do to change gears between Reverse, Neutral and Drive is brake and turn the dial of the Shift by Wire system left or right. The P button puts the Kia EV6 in Park mode.

Drive Mode Select (DMS). The Kia EV6 can adjust to the way you like to drive. Choose Normal, Sport or Eco drive mode using steering wheel or voice controls. Sport mode lets you accelerate more quickly, while Eco saves energy to extend your driving range. Each mode has a theme display on the cluster screen with unique visual effects that may also switch from white to black at night.

Smart regenerative braking system (SRS 2.0). SRS 2.0 improves the vehicle's range and stability by optimizing front and rear-wheel regenerative braking. It can be operated with the steering wheel paddle switches and adjusts the level of regenerative coasting based not only on navigation data, but on radar data as well.



Reinventing how we charge.

The Kia EV6 multi-charging system operates with both 400 V and 800 V chargers without the need for an additional adapter. And unlike previous EVs, which only accept one-way charging, the Kia EV6 becomes your portable energy source wherever you are. So you can power any electric item you need for any inspirational journey.

In addition, the heat pump system recaptures heat waste from the motor and other electric components to reduce winter range loss by almost 19%.



Electric Global Modular Platform (E-GMP). The Kia EV6 is the first vehicle based on the Kia E-GMP platform. The new long-wheelbase platform is a clean slate. It introduces a flat floor, facilitating new comfort and utility choices. Its modularization permits more flexible development to secure performance, maintenance and safety objectives. Performance benefits include greater power, driving range and control, as well as shorter charging times.

Charging port. The charging port door opens and shuts electronically. Just press the door itself, or the button on the left of the dash controls. You can also use a smartphone or voice command. Inside the cover, a bar graph displays the charging level.

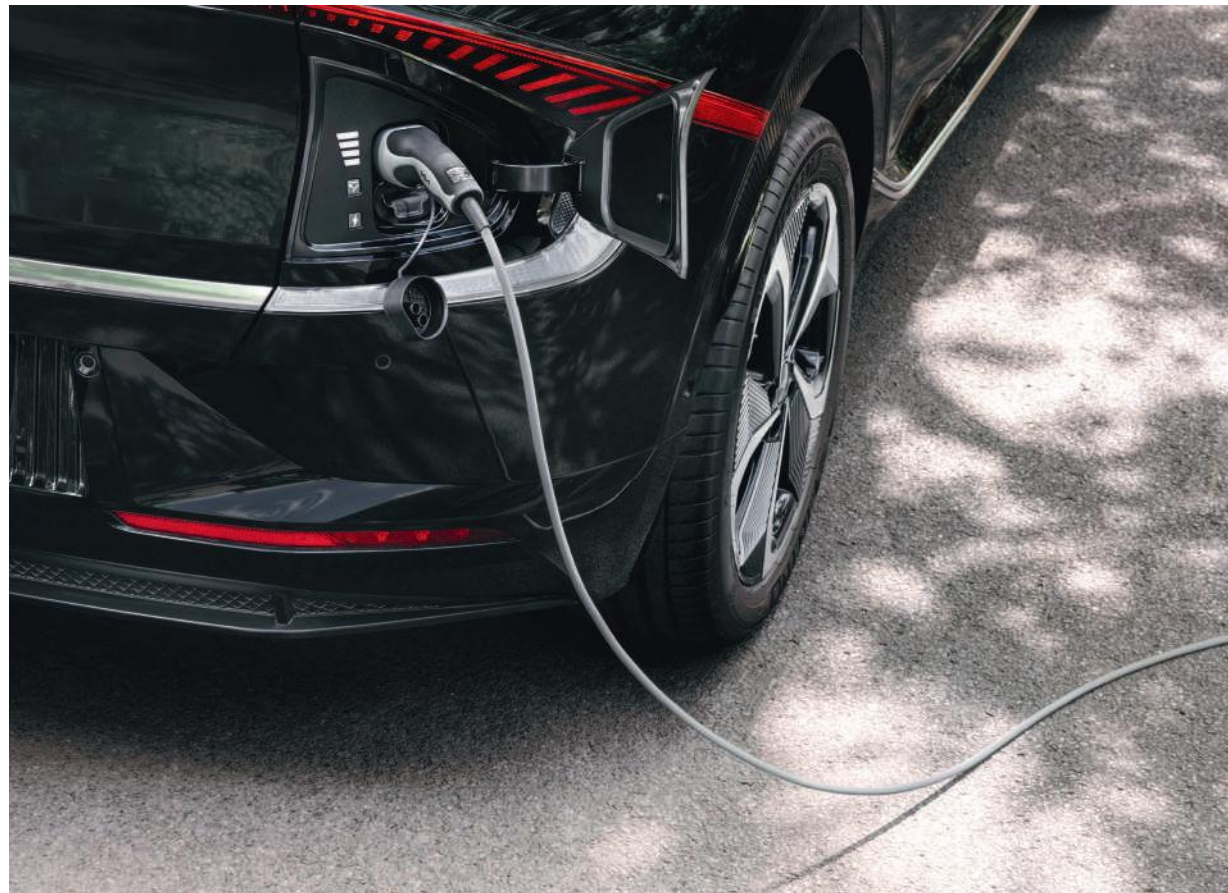


Vehicle-to-load (V2L). Get 220 V of alternating current to power your devices, inside or outside the Kia EV6. Fully charged, its vehicle-to-load feature offers 3.6 kW of power, enough to run a large TV screen or a medium-sized air conditioner for 24 hours. Inside the Kia EV6, just select EV Ready or Utility mode and use the outlet at the base of the rear seat. Outside, simply attach the V2L connector to the charging outlet.



Intriguing ideas. Inspired choices.

Let the Kia EV6 stimulate your imagination. Choose from our comprehensive range of high-quality accessories, all of which blend perfectly with its inspirational character. Whether you feel like adding an extra hint of distinction, or a touch of practicality, you can be assured that all our accessories are manufactured to the same meticulous standards as the EV6 itself.



Charging cable, Mode 3. Fast-charging your new electric vehicle couldn't be easier or faster. The Mode 3 charging cable is equipped with Type 2 plugs at both ends and can be used for day-to-day charging at public and domestic charging points with Type 2 sockets.



Bike carrier for all tow bars. The ideal companion for cycling holidays or day trips. Designed for maximum enjoyment and minimum hassle. Easy to load, theft-resistant and you can even open the tailgate with your bikes on the back!



Tow bar, detachable. Whenever you have substantial cargo in tow, this top-quality, corrosion-resistant steel tow bar is ideal for efficient transportation.



Textile floor mats, velour. Keep your cabin unblemished for longer. These high-quality velour floor mats will protect your car's interior from everyday dirt and enhance its look at the same time. They feature the EV6 logo in the front row and are held in place with fixing points and anti-slip backing.

Customize your distinctive style.

The EV6 is available in a wide range of colours to fit your style, whether bold or subdued. And no matter which design you pick, the wheels not only look great but also provide added aerodynamics.



Earth - Charcoal grey vegan leather.



GT-line - Black suede with vegan leather bolsters.

Exterior body colours



Steel Gray (KLG)*
*Earth only



Gravity Blue (B4U)*
*Earth only



Yacht Blue (DU3)



Runway Red (CR5)



Aurora Black Pearl (ABP)



Moonscape (KLM)
GT-line only



Snow White Pearl (SWP)

Wheels

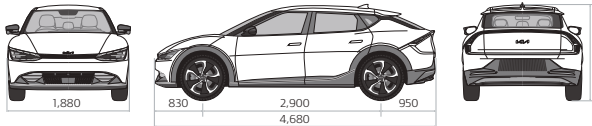


19" alloy wheel (Earth)

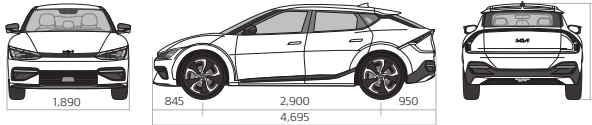


20" alloy wheel (GT-line)

Dimensions (mm) _ Earth



Dimensions (mm) _ GT-line



Illumination



MFR LED headlamps (Earth)



IFS LED headlamps (GT-line)

Information about the tyres with respect to fuel efficiency and other parameters according to Regulation (EU) 2020/740 are available on our website, please visit [www.kia.com]. The information on tyres as indicated is for information only.

Created for complete peace of mind.

When you purchase a new Kia EV6, we want you to feel totally connected to your driving experience, not just today, but for years to come. That's why every new Kia comes with exclusive extended warranties.



7-year vehicle warranty. Every Kia benefits from a 7-year/150,000 km new car warranty (up to 3 years unlimited; from 4 years 150,000 km). This bumper-to-bumper warranty is free and transferable to subsequent owners, provided the car is regularly maintained in accordance with the servicing schedule.

Kia 7-year EV/HEV/PHEV Battery Warranty. When you switch to a Kia Electric (EV), Hybrid Electric (HEV) or Plug-in Hybrid (PHEV), it's good to know that our batteries are built to have a long life*. That's why at Kia we are happy to offer you a 7-year warranty either from initial registration or 150,000 km whichever comes first. Even for our low voltage (48 V and 12 V) batteries in Kia Mild-Hybrid electric vehicles (MHEVs), our Kia warranty covers you for a period of 2 years from initial registration regardless of mileage. All of which means you can simply enjoy the experience of driving our eco-friendly range, every day for years to come.

*Kia high voltage lithium ion battery-units in electric vehicles (EV), hybrid electric vehicles (HEV) and plug-in hybrid electric

vehicles (PHEV) are built to have a long life. These batteries are covered by the Kia warranty for a period of 7 years from initial registration or 150,000 km, whichever comes first. For low voltage batteries (48 V and 12 V) in mild-hybrid electric vehicles (MHEV), the Kia warranty covers a period of 2 years from initial registration regardless of mileage. For EVs and PHEVs only, Kia guarantees a 70% capacity of the battery. Capacity reduction of the battery in HEV and MHEV is not covered by the warranty. To minimize possible capacity reduction, consult the Owner's Manual. Find more information about Kia warranty at www.Kia.com.

Kia Service Plan

Our Kia Service Plan means looking after your new Kia is a piece of cake. In order to keep your new Kia running like new, it has to be serviced every year. Now imagine having all the servicing your new Kia will need for the next two to five years sorted and paid for, in advance or monthly, and at a competitive price. Introducing Kia Service Plan, the easy way to look after your new Kia, and protect your 7 year warranty.

Stay in touch with Kia

Visit www.kia.com for all the latest news. Find out more about Kia and our exciting new car range. Get updates on achievements in alternative fuel development, like liquid gas, hybrid and fuel cell technology. Or discover what our Environment Research Centre is working on. We're also involved in major sporting events: Kia is an official partner of both UEFA and FIFA. We sponsor the Australian Open and the tennis star Rafael Nadal. Here in Ireland, Kia is a proud sponsor of The Kia Race Series. You can also register on MyKia to receive email alerts from Kia Ireland. See kia.com/ie/mykia/ for more.

KiaFinance.ie

Kia Ireland has teamed up with Bank of Ireland Finance to offer Kia customers affordable HP and PCP finance packages across the entire Kia range. Your local Kia Dealer will explain in details the options available. For indicative costs, log on to our finance calculator at kiafinance.ie.

KiaService.ie

Is your current Kia car due a service? Log on to kiaservice.ie to book your service at your favourite Kia Dealer. Pick your preferred time and get a cost estimate upfront. It couldn't be easier.



All information and specifications are correct at the time of printing and are subject to change without notification. However some of the models and features shown in this brochure may vary from the models and equipment available here in Ireland. Please consult with your dealer to ensure that the vehicle you order has the specification you require. Due to the limits of the printing process, the car body colours shown may differ slightly from actual colours.

Kia Ireland,
Unit A8 Calmount Park,
Calmount Road,
Dublin 12,
Ireland



Movement that inspires